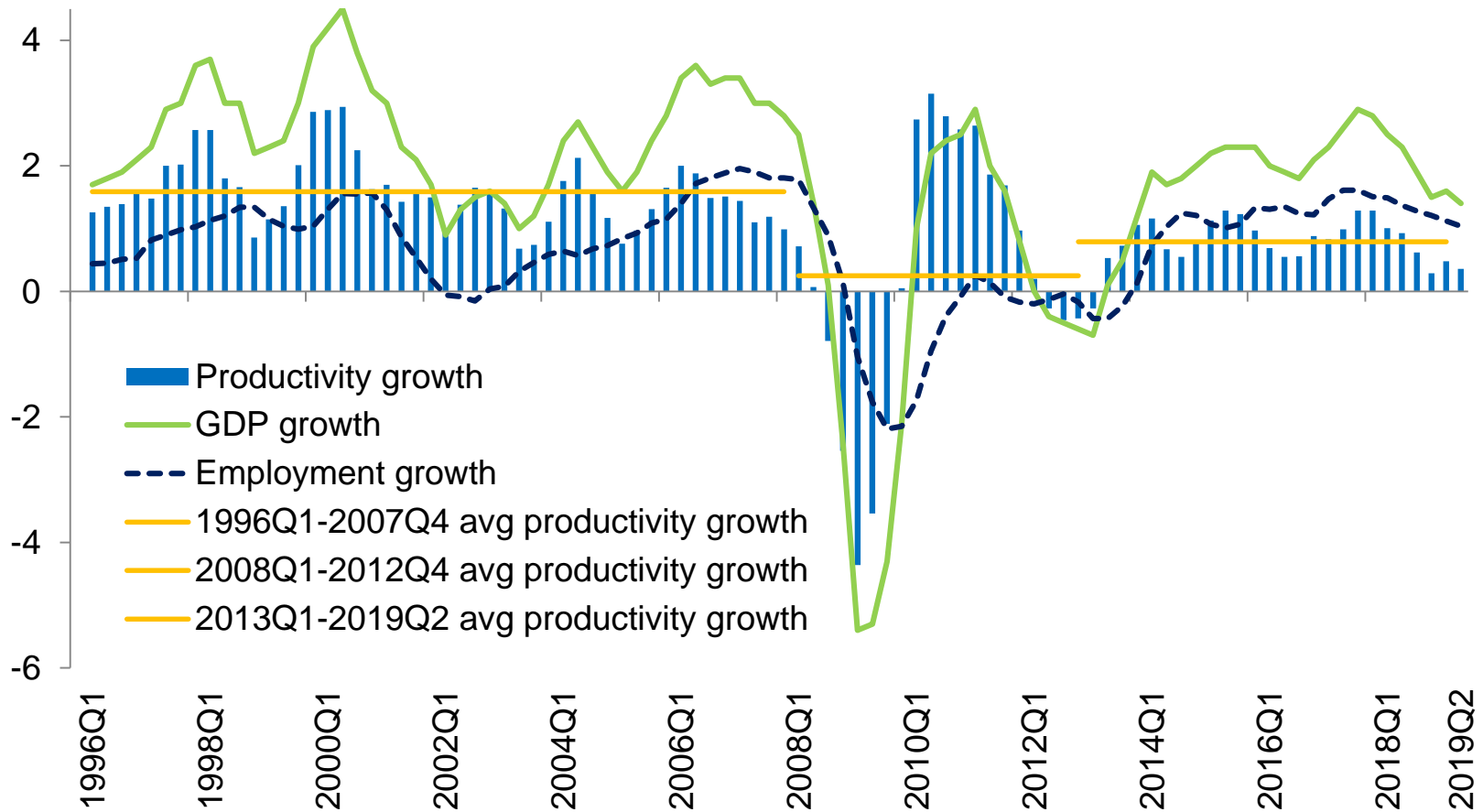




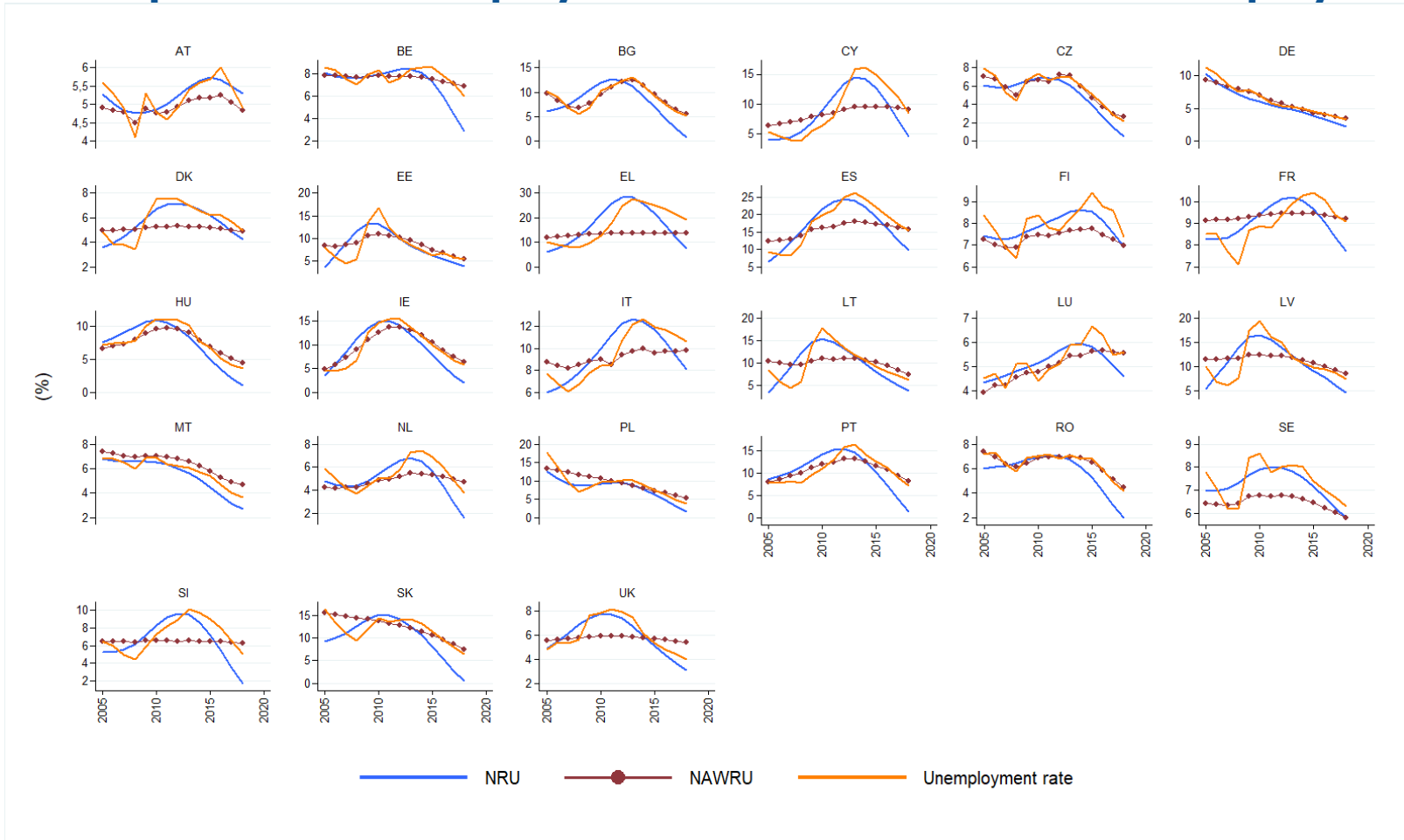
# Labour market and wage developments in Europe 2019

**Graph I.1.1: Employment, GDP and productivity growth in the EU**





## Graph I.2.10: Unemployment rates and structural unemployment



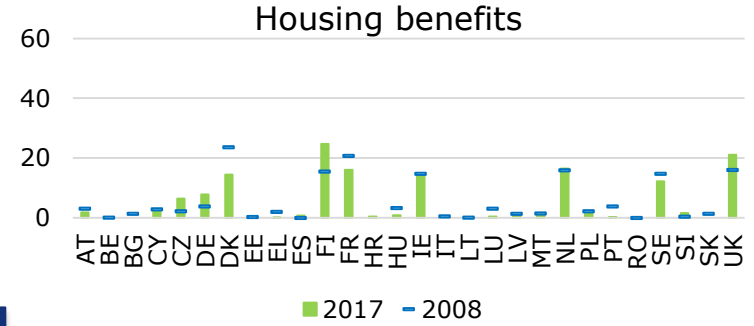
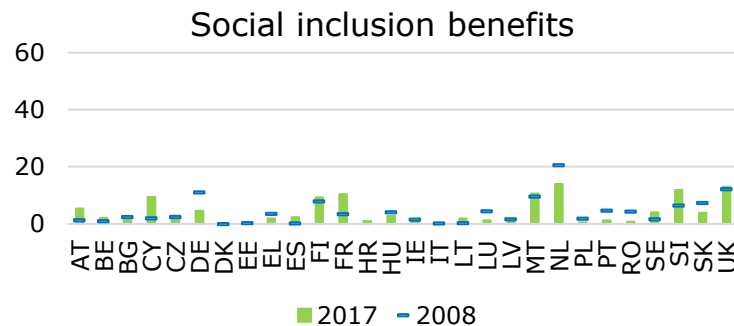
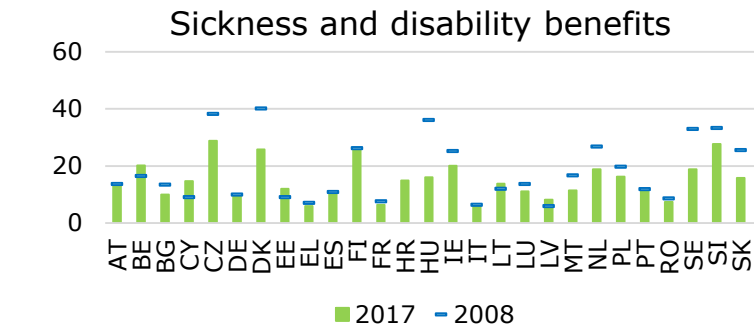
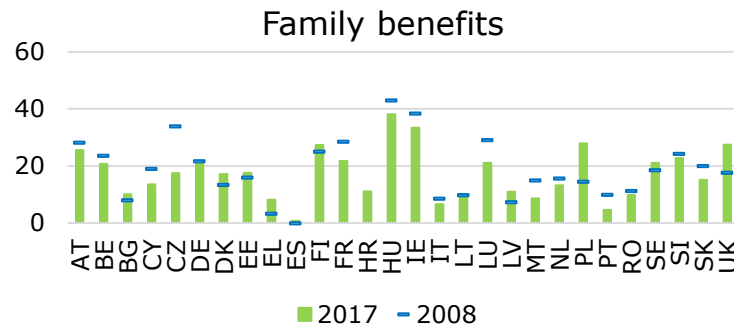
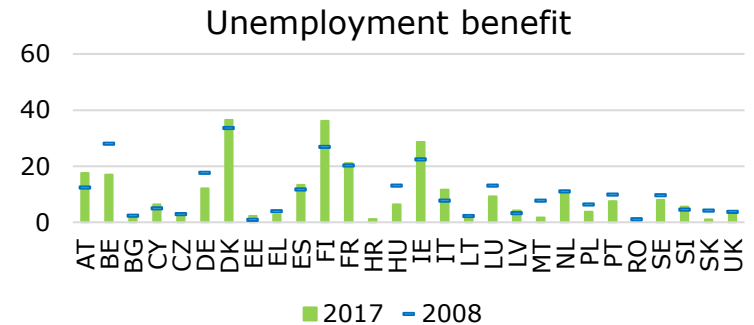
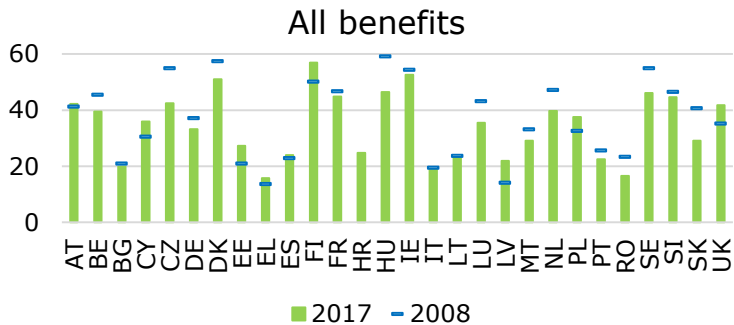


# **POLICY DEVELOPMENTS: THE POVERTY-REDUCING EFFECTS OF SOCIAL TRANSFERS**

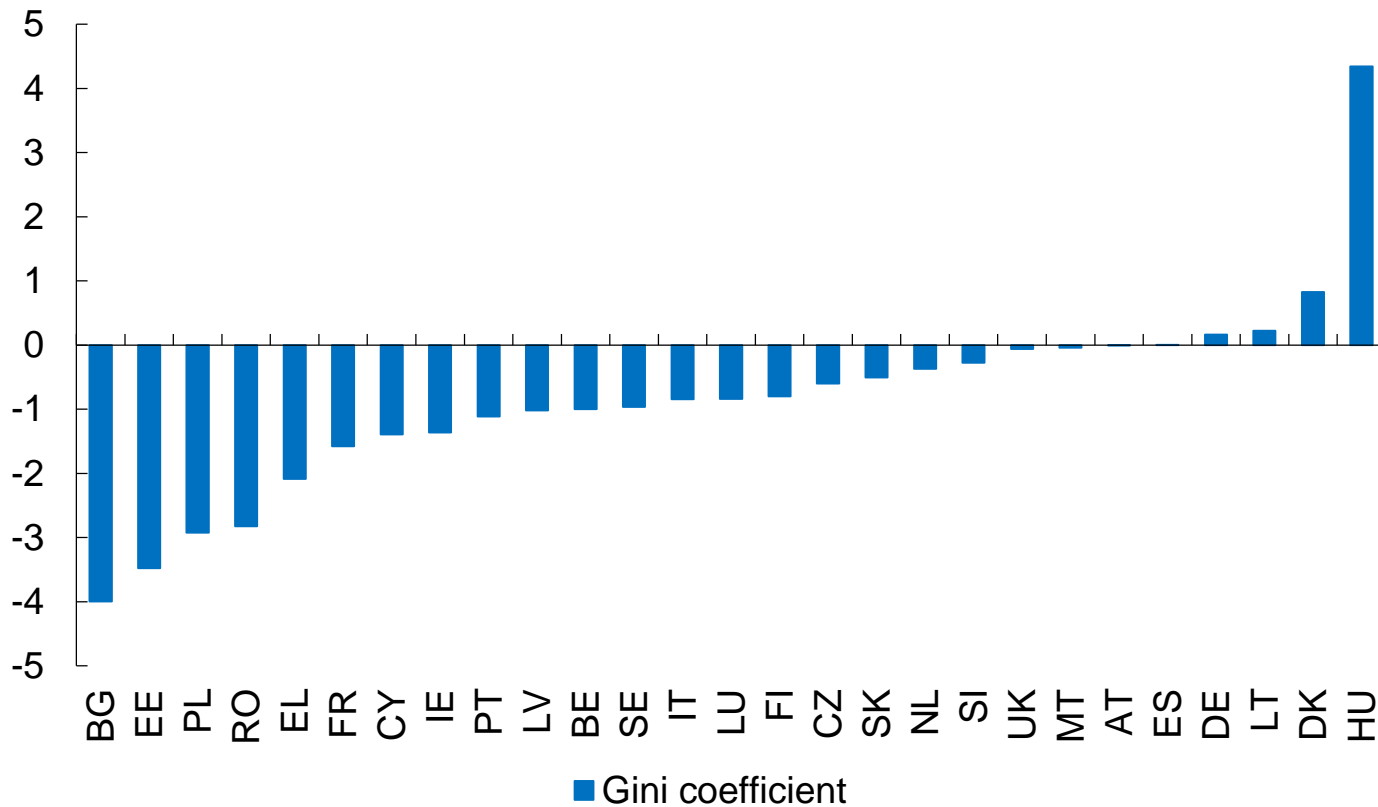
# Motivation

- Before the crisis not all countries were prepared to cope with a prolonged recession
- Plenty reforms have been implemented after the crisis in tax & benefits systems
- Are MS better prepared to deal with a possible slowdown?

**Graph I.3.14: The impact of social transfers on the at-risk of poverty rate, by type of transfer, 2008, 2017**



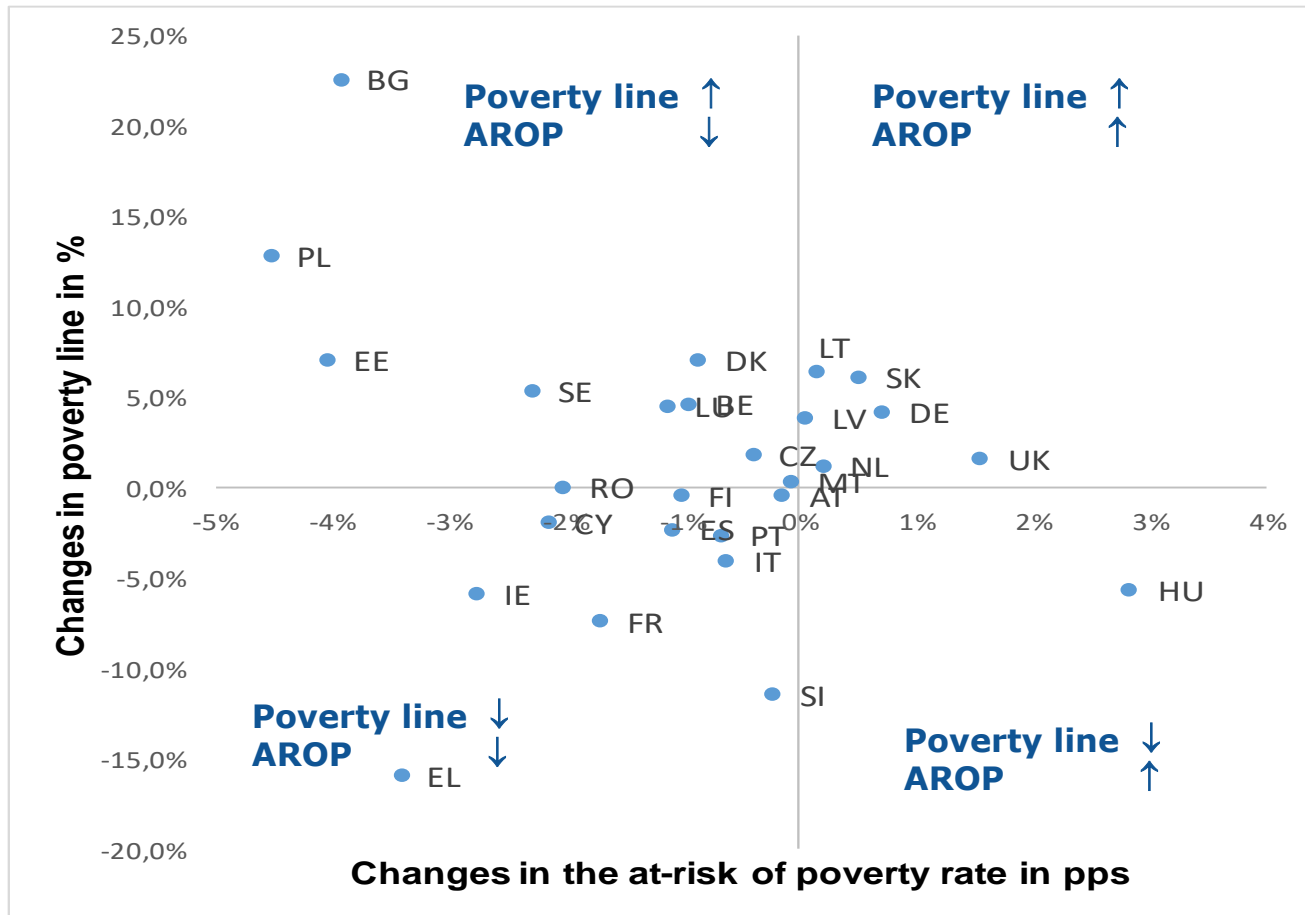
**Graph I.3.18: Change in the Gini coefficient due to tax and benefit policies: 2008 vs 2018**



# Changes in disposable income by income deciles due to tax-benefit policy changes: 2008 vs 2018



## Change in the at-risk-of-poverty rate due to tax and benefit policies and changes in the poverty line: 2008-2018





**Grazie per l'attenzione**